

PEEK
GALLERY



GABRIELLE
POOL

CONTENTS

BIOGRAPHY

PAINTINGS

RECENT MEDIA

CV

GABRIELLE POOL BIOGRAPHY



Established NewZealand/Australian artist Gabrielle Pool has been exhibiting for 27 years. Her painting and mixed media work has been exhibited in solo and group exhibitions in New Zealand, Australia, Japan, China, U.S.A, The United Kingdom, Greece and the Bahamas. Partly schooled in Japan, Gabrielle's early inspiration from her teacher, Mori Sensei led to a powerful oriental influence, with her first solo exhibition in Chiba-Ken at the age of 16.

Today, Gabrielle has held 30 solo shows over the past 26 years and has had numerous invitations to exhibit in selected group exhibitions. She has further been a finalist in the Sulman Prize AGNSW, the Mosman Art Prize and just recently the Paddington Art Prize. Gabrielle is included in leading international private and corporate collections.

In 2004 Gabrielle began to record several of the world's vanishing tribes - the Hamar Tribe in Ethiopia, the Maasai of Kenya, and in 2010, the Indigenous women artists of Utopia in Australia's Northern Territory. Gabrielle has immersed herself in tribal life, often using sacred body paint pigments within her work.

"My painting has always been driven by a desire to preserve and record the history of ancient people and



their environments, in a world that seems to be trying its very best to eradicate them and 'civilise' them."

In 2005 Gabrielle was invited by Nelson Mandela to travel to Africa to collaborate in the production of the Unity Series, alongside 20 other leading international artists. The works depicted the five phases of Mandela's life, culminating in his vision for the future, launched at the World Economic Forum at Davos in Switzerland in the same year. The editioned, boxed sets of the prints are currently available, signed by the artists and Nelson Mandela.

Recent years, Gabrielle's work has included imaging expeditions to Amman Jordan, Budapest Hungary, and the exquisite country around her home and studio in the Northern Rivers.

She now resides and paints from her studio in Myocum in Northern NSW..







GHOST OF BULLRUSH
OIL ON CANVAS / 200 X 200 CM





ROSE WOODS

OIL & MIXED MEDIA ON CANVAS / 200 X 200 CM

[ENQUIRE ABOUT THIS ARTWORK](#)



AMBOSELI
OIL ON CANVAS / 200 X 200 CM





OLDE WOODS
OIL ON CANVAS / 200 X 200 CM





THE MOORS

OIL ON CANVAS / 200 X 200 CM

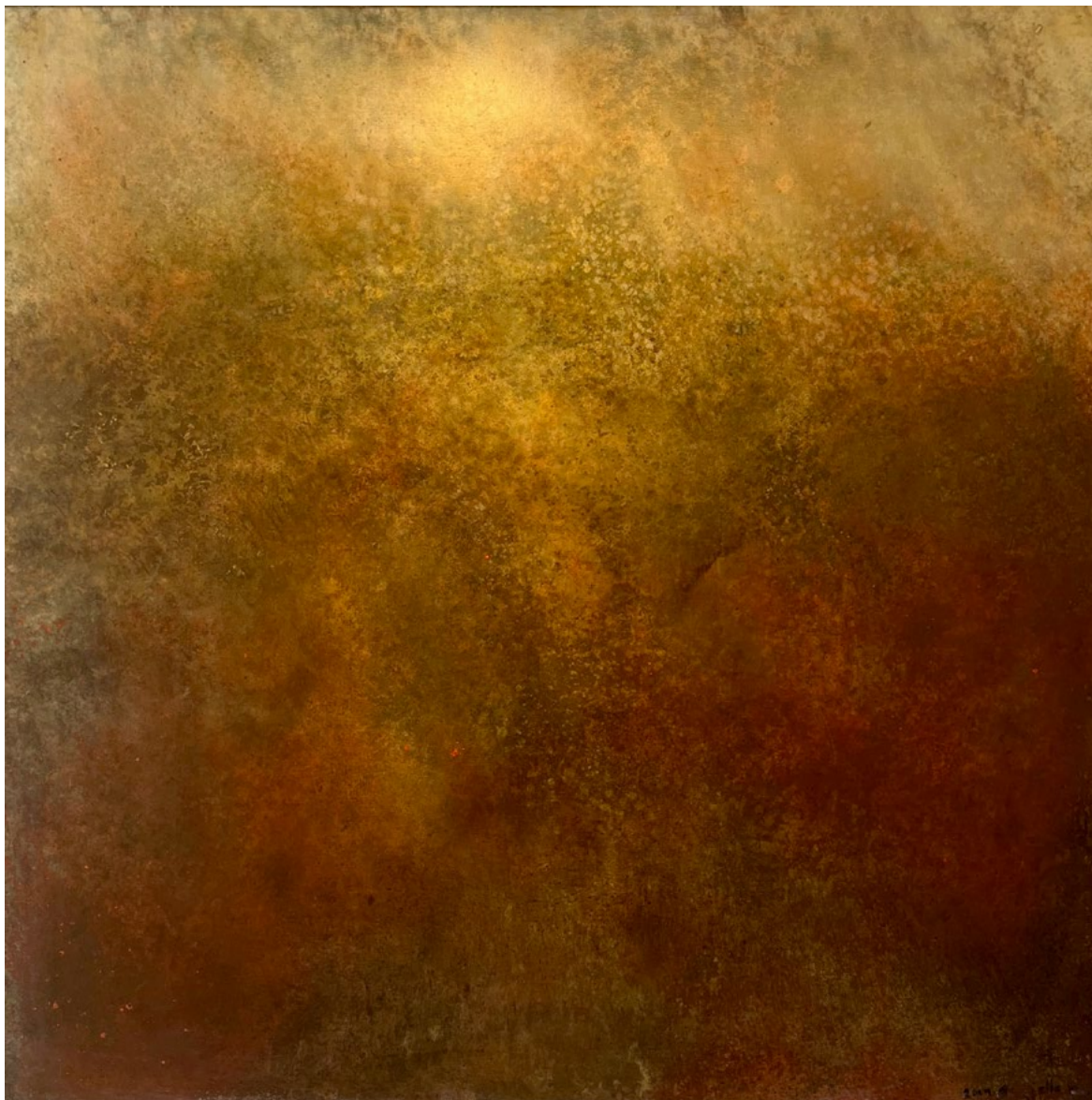
[ENQUIRE ABOUT THIS ARTWORK](#)



THE MOORS

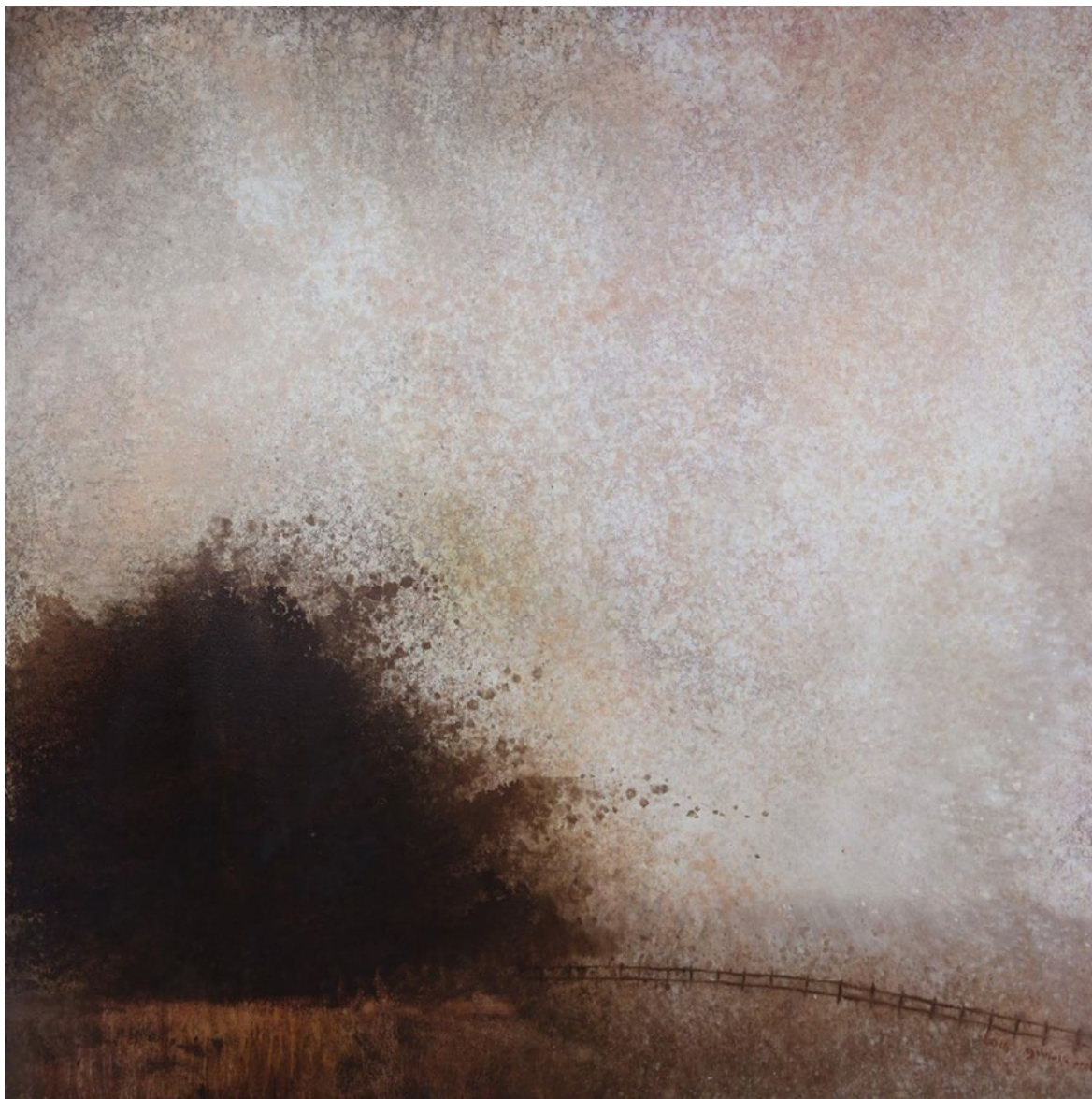
OIL ON CANVAS / 200 X 200 CM

[ENQUIRE ABOUT THIS ARTWORK](#)



ALGAE BLOOM
OIL ON CANVAS / 200 X 200 CM





BAMBOO LOOMING
OIL ON CANVAS / 200 X 200 CM
[ENQUIRE ABOUT THIS ARTWORK](#)



ENORMITY OF NOTHING
OIL ON CANVAS / 200 X 200 CM

[ENQUIRE ABOUT THIS ARTWORK](#)



ELEGY
OIL ON CANVAS / 200 X 200 CM





WINTER IN NARNIA
OIL ON CANVAS / 200 X 200 CM
[ENQUIRE ABOUT THIS ARTWORK](#)



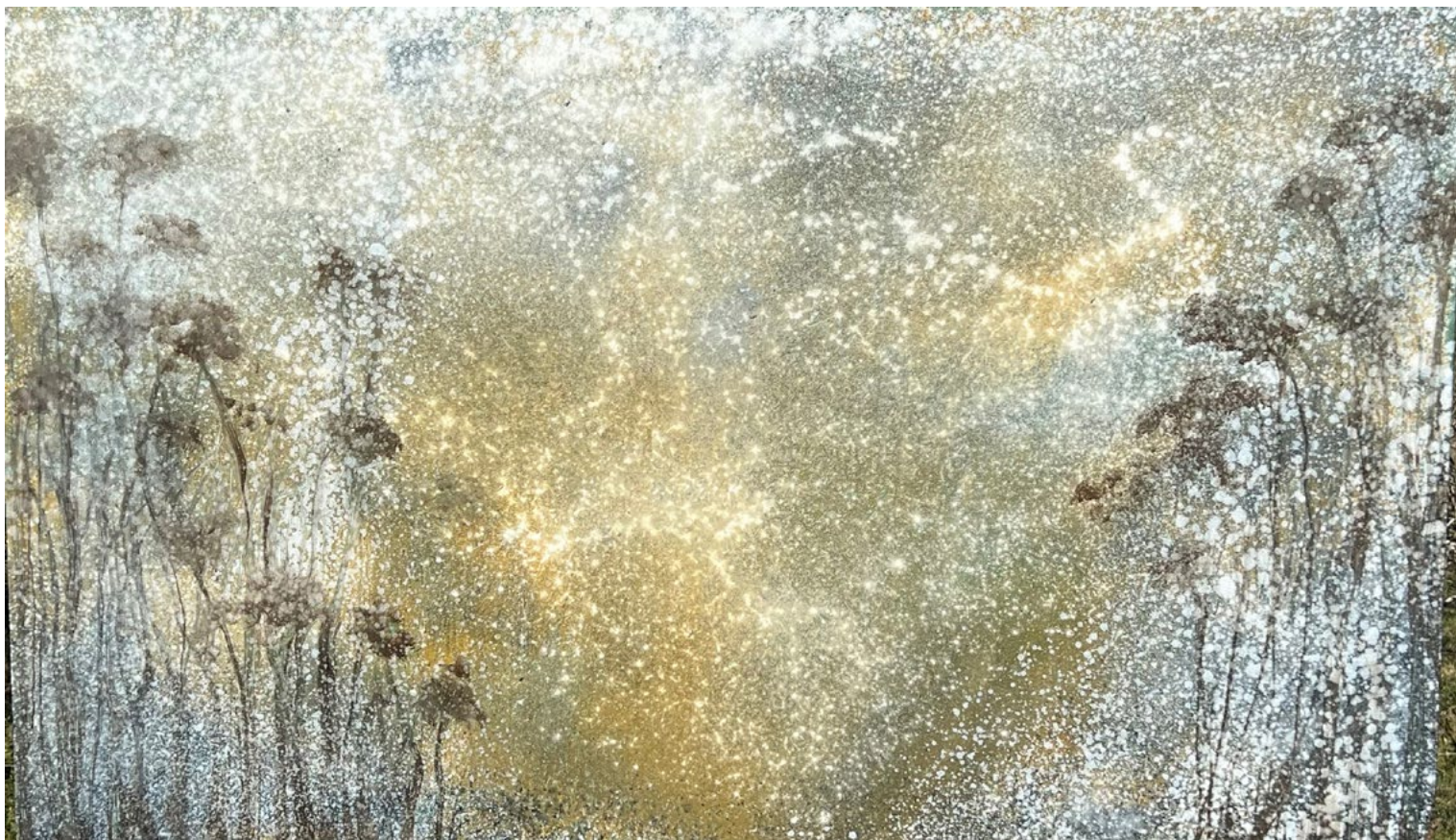
PETRICHOR
OIL ON CANVAS / 200 X 200 CM





NASHUA MIST
OIL ON CANVAS / 200 X 200 CM





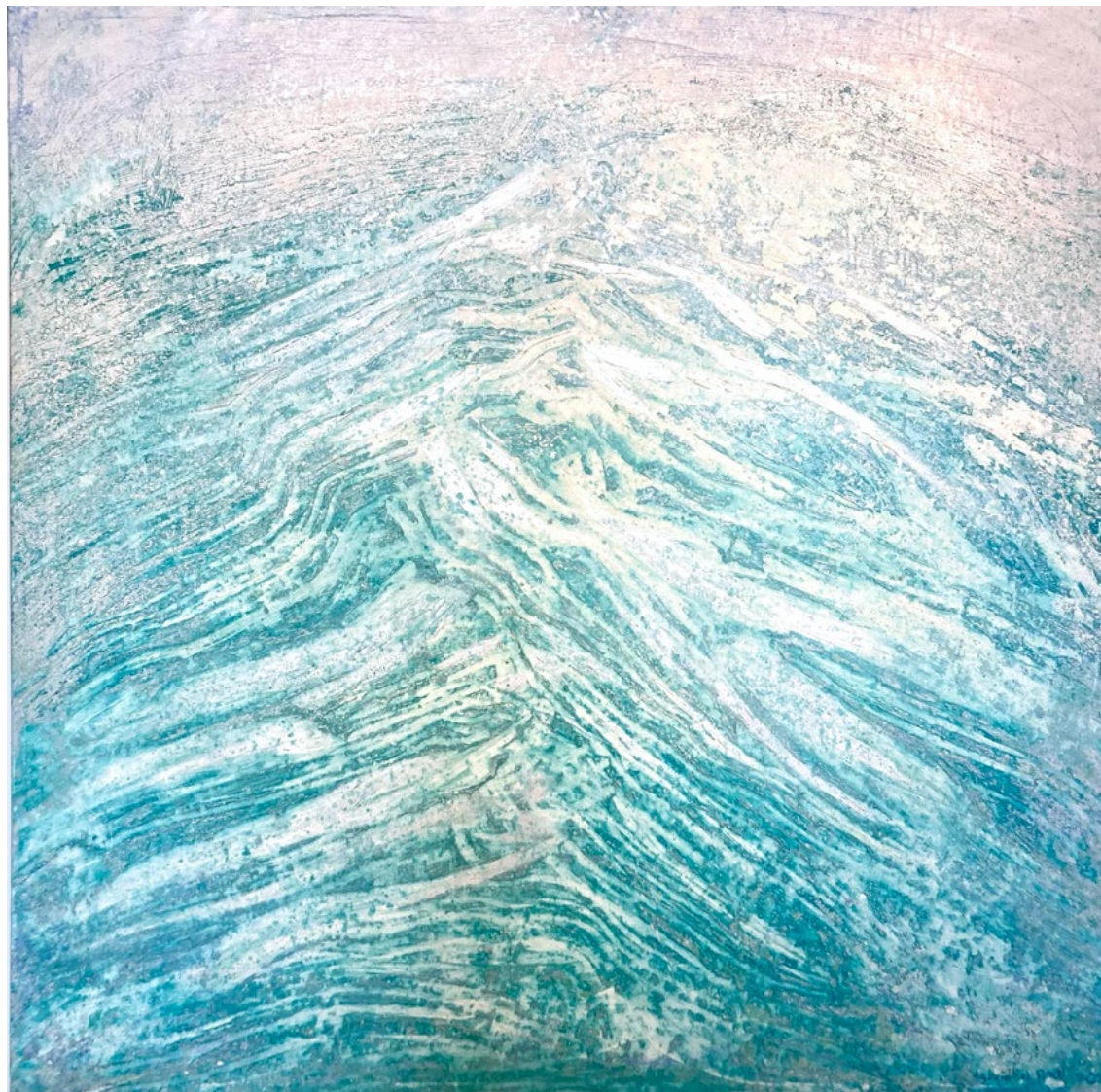
TRAVELLING LIGHTS
OIL ON CANVAS / 250 X 150 CM





TRAVELLING LIGHTS
OIL ON CANVAS / 250 X 150 CM





OCEAN COUNTRY
OIL ACRYLIC ON CANVAS / 175 X 175 CM

[ENQUIRE ABOUT THIS ARTWORK](#)



REVENGE OF THE REINDEER 1

OIL ON CANVAS / 100 X 200 CM

[ENQUIRE ABOUT THIS ARTWORK](#)



REVENGE OF THE REINDEER 2

OIL ON CANVAS / 100 X 200 CM

[ENQUIRE ABOUT THIS ARTWORK](#)

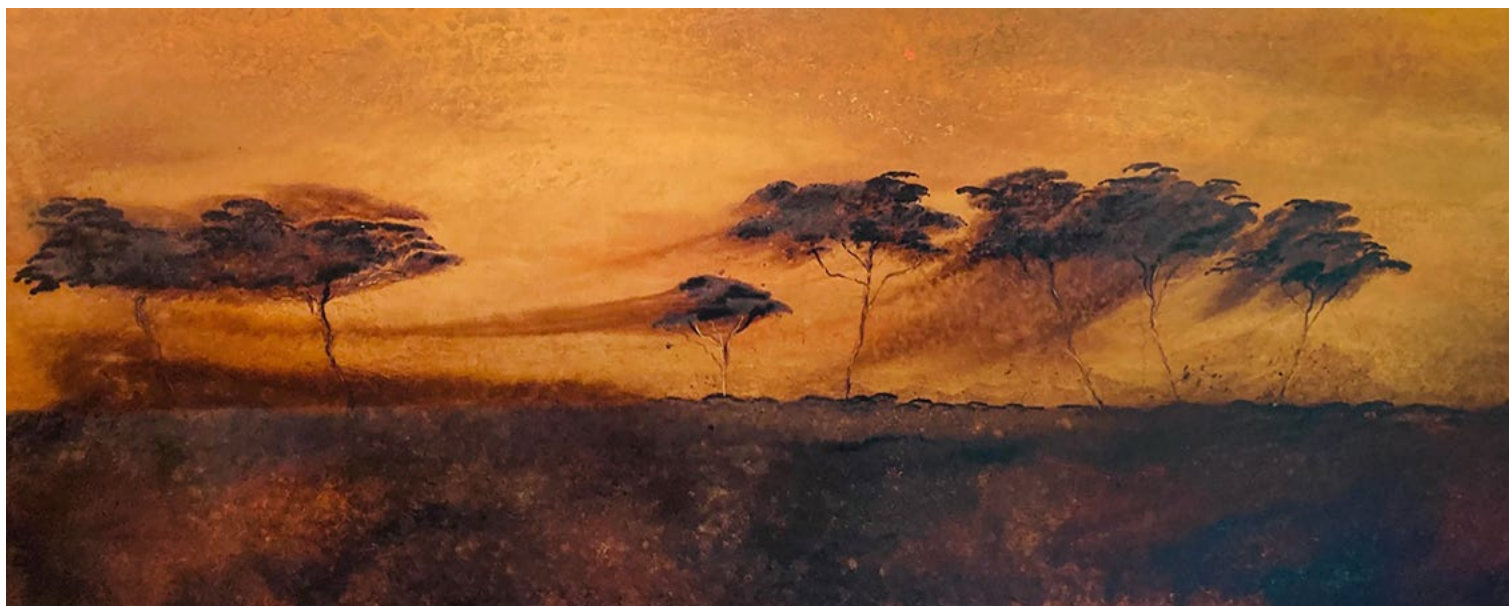


SEA STORM (STUDY)
OIL ON CANVAS / 186 X 91 CM





NOAH'S ARK #1 (STUDY) ●
OIL AND ACRYLIC ON CANVAS / 150 X 150 CM



IN SERENGETI



OIL ON CANVAS / 270 X 110 CM / GABRIELLE POOL



RABBITS' VIEW
OIL ON CANVAS / 150 X 150 CM





CLUNES

OIL ON CANVAS / 150 X 150 CM





DARK EMU
OIL ON CANVAS / 150 X 150 CM





DRIVING HOME
OIL ON CANVAS / 150 X 100 CM





VIEW FROM KOONYUM RANGE ●

OIL ON CANVAS / 140 X 130 CM / 2021 PADDINGTON ART PRIZE FINALIST



HOUSE IN WOODS - AUTUMN

OIL ON CANVAS / 200 X 100 CM

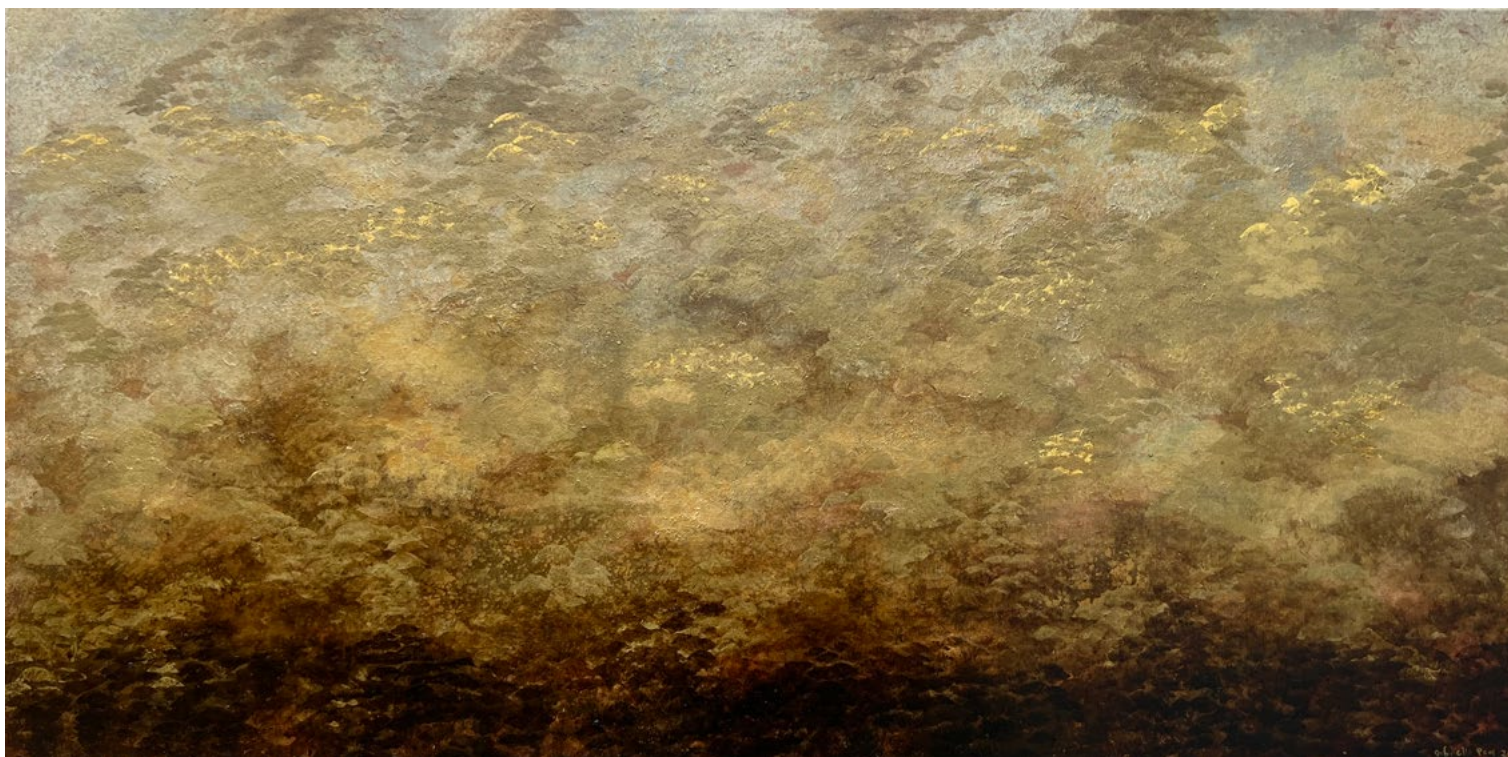




HOUSE IN WOODS - WINTER

OIL ON CANVAS / 200 X 100 CM





ESCARPMENT IN GOLD
OIL AND 24 CARAT GOLD LEAF ON CANVAS
200 X 100 CM





ELDERFLOWER FOREST ●
OIL ON CANVAS / 150 X 150 CM / GABRIELLE POOL



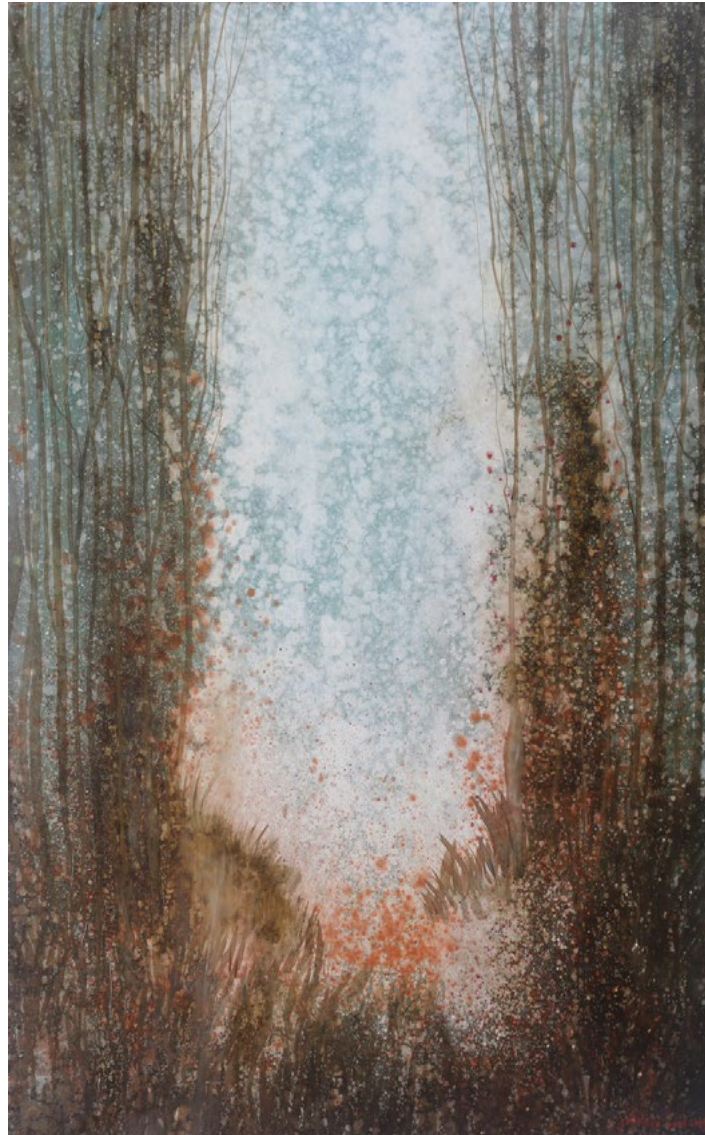
LUMINESCENCE
OIL ON CANVAS / 150 X 150 CM





THE CORRIDOR
OIL ON CANVAS / 120 X 180 CM





THE INVITATION

OIL ON CANVAS / 120 X 180 CM





ENCHANTED FOREST 1
OIL ON CANVAS / 150 X 200 CM





ENCHANTED FOREST II
OIL ON CANVAS / 150 X 200 CM





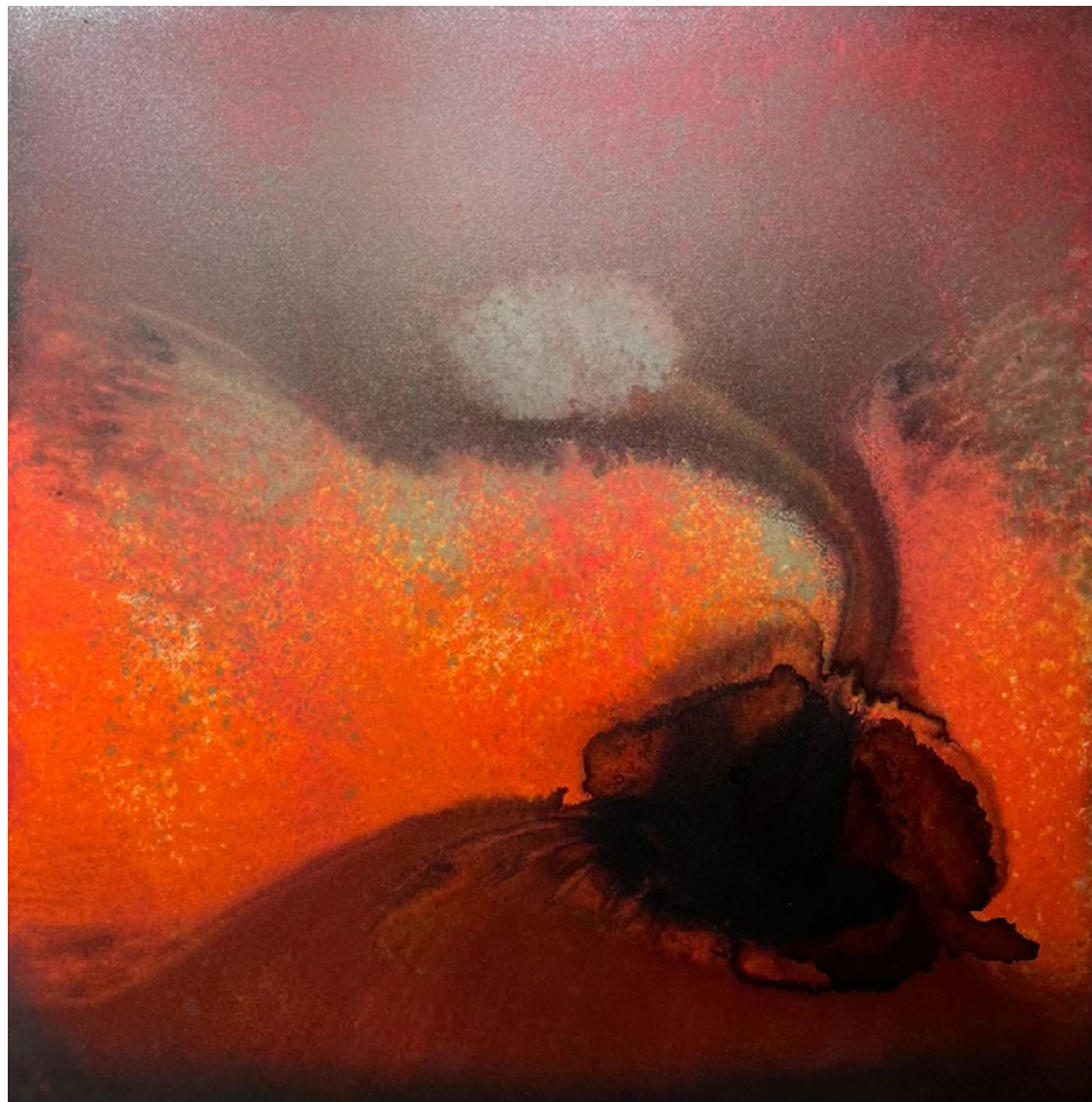
IMMORTAL MEMORY
OIL ON CANVAS / 200 X 100 CM





IMMORTAL MEMORY
OIL ON CANVAS / 200 X 100 CM





GALACTIC PARTY

OIL ON CANVAS / 150 X 150 CM

[ENQUIRE ABOUT THIS ARTWORK](#)



IN THE THICKET

OIL ON CANVAS / 140 X 140 CM

ENQUIRE ABOUT THIS ARTWORK





COUNTING SHEEPS

OIL ON CANVAS / 200 X 150 CM

[ENQUIRE ABOUT THIS ARTWORK](#)



LITTLE RED HOUSE
OIL ON CANVAS / 91 X 67 CM





THE UNKNOWN



OIL ON CANVAS / 180 X 120 CM / GABRIELLE POOL



FALLEN EMBER
OIL ON CANVAS / 150 X 100 CM
[ENQUIRE ABOUT THIS ARTWORK](#)



LOW GRASS
OIL ON CANVAS / 200 X 100 CM





LOW GRASS
OIL ON CANVAS / 200 X 100 CM





SEAMIST 1

OIL ON CANVAS / 150 X 100 CM





SEAMIST 2
OIL ON CANVAS / 150 X 100 CM





DAWN CONSTELLATIONS
OIL ON CANVAS / 200 X 100 CM





ANT EYE VIEW
OIL ON CANVAS / 200 X 100 CM





/ ARTIST PROFILE /

COME FULL CIRCLE

Driven by an insatiable curiosity, Gabrielle Pool has long been carving out her own unique journey, with her artwork attesting to the faraway places and foreign influences she has encountered along the way. Charlotte Middleton writes.

At age five, Gabrielle Pool was made an example of in a way she will never forget. The kindergartner was proud of the wild scribble she'd produced during an en plein air drawing lesson, but her primary school teacher thought differently. "She scolded me in front of the kids and said, this is how not to draw a tree," Pool remembers.

Fast forward to the present, and the New Zealand-born landscape painter has come full circle, being named as a finalist in the Paddington Art Prize

for Australian landscape painting for the past two years. These days, Pool paints dreamlike, life-sized atmospheric landscapes in oils, "the kind you can walk into and disappear in," she says. She continues to capture the spirit and mood of landscape the way her famed scribble had sought to, but she has journeyed far and wide since.

Pool had a first formative cultural experience while attending school in Japan as an exchange student. Struggling with the language barrier, she turned to art as a means of expression and proceeded to stage her first solo show in the local council hall.

Becoming somewhat of an anthropologist after her time in Japan, Pool's adventurous spirit propelled her to far-flung locations like China, the Bahamas, Greece, and Africa, where she exhibited and continued to evolve her practice. In 2004, she was invited to spend time immersed in the Hamar Tribe in Ethiopia, and so began the documentation of the vanishing tribes that was to become a central focus of Pool's practice.

The artist went on to immerse herself in tribal life with the Maasai of Kenya, explaining: "My painting has always been driven by a desire to preserve and record the history of ancient people and their environments, in a world that seems to be trying its very best

to eradicate and civilise them," she says. She was subsequently invited by Nelson Mandela to contribute to the Unity Series alongside 20 other leading international artists, in a project launched at the World Economic Forum in Switzerland.

Living in Australia on and off for the past two decades, Pool more recently spent time among Anmatyerr women and children in Utopia (Alyawarre), northeast of Alice Springs. "It was here I took my first steps towards imaging and paying tribute to Australian Indigenous culture, sketching artists, working en plein air, painting their Country," she says.



Her practice has long been enriched by her itinerant existence, but it would seem Pool is starting to put down some more solid roots in the Northern Rivers region of New South Wales.

"I am now painting in a studio nestled under a 400-year-old fig tree, getting my hobbit on," she

says, having last year established her own art gallery in the heart of Byron Bay. As well as showcasing her own work, Peek Gallery hosts a dynamic program of contemporary exhibitions drawn from a selected group of established artists and emerging talent.

Pool has large-scale commissions held in private and public collections locally and internationally and has been a finalist in a number of art prizes. However, she has no intention of resting on her laurels: "I've been practicing as an artist for a few decades, but I feel I'm really just beginning to ripen now."



SOLO EXHIBITIONS

2019	'Suspirium' Art Index, BCFA, Sydney, Australia 'Studio Sale' Brenda Colaha Fine Art, Sydney, Australia
2017	'Halcyon' Two Tails Winery Nana Glen, NSW, Australia
2015	Capital Culture Gallery, UK
2014	Art Auction for Charity Oasis Africa, Sydney, Australia
2013	Studio Exhibition, Sydney, Australia Muk Muk Fine Art Gallery, Alice Springs & Darwin, Australia
2012	The Ritz-Carlton, Laguna Niguel, CA, USA
2011	Dreamings, Gallery McCollum, Laguna Beach, CA, USA
2010	Utopia 26 S 148 E, Brenda Colahan Fine Art, Sydney, Australia Nurybah Gallery, Byron Bay, Australia Fat Prophets, Sydney, Australia
2009	Waterbar, Blue Hotel, Woolloomooloo, Australia
2008	Amisfield Winery, Queenstown, New Zealand The Ivy, Sydney Australia
2007	Bayswater Brasserie, Sydney, Australia Griffith Cottage Gallery, Griffith, Australia M1NT, Hong Kong
2006	Square 1 Gallery, London, UK
2005	Touch of Mandela Gallery Sydney, Australia Griffith Cottage Gallery, Griffith, Australia
2004	Touch of Mandela Gallery, Sydney, Australia Griffith Cottage Gallery, Griffith, Australia
2003	Kamel, Albert Park, Melbourne, Australia
2002	Applause Art Gallery, South Melbourne, Australia Pomegranate, South Melbourne, Australia
2001	Kamel, Albert Park, Melbourne, Australia
1998	Tap Gallery, Sydney, Australia Luigi Bros, Sydney, Australia
1996	Fat Dog Gallery, Rotorua, New Zealand Freos, Rotorua, New Zealand

1996	Astrolabe, Taupo, New Zealand Replete, Taupo New Zealand
1995	Rotorua Art and History Museum, Rotorua, NZ
1994	Freos, Rotorua, New Zealand La Cucina, Auckland, New Zealand
1993	Mobara City Council Gallery, Japan

SELECTED GROUP EXHIBITIONS

2022	Concrete Candy, Group Exhibition, Peek Gallery, Byron Bay
2021	East of Everywhere, Group Exhibition, Peek Gallery, Byron Bay
2020	Gallery Opening, Group Exhibition, Peek Gallery, Byron Bay
2020	Finalist, Paddington Art Prize 2020, Defiance Gallery, Paddington, Australia
2019	Brody 10 year Anniversary Retrospective Exhibition, Budapest, Hungary
2018	20/20 Vision 20 years 20 women, Brenda Colahan Fine Art, Sydney Australia Capital Culture Gallery Official Opening, Coltishall Norfolk Broads UK Capital Culture Gallery AAF Hamburg, Germany Capital Culture Gallery AAF Milan, Italy Capital Culture Gallery AAF Stockholm, Sweden Capital Culture Gallery AAF Hampstead, London, UK Capital Culture Gallery Art Fair East Norwich, UK
2017	Last Looks, Brody Studios Budapest, Hungary Capital Culture Gallery AAF New York, New York USA Capital Culture Gallery AAF Battersea Park, London Capital Culture Gallery AAF Hampstead, London Capital Culture Gallery Art Fair East Norwich, UK
2016	Capital Culture Gallery AAF Battersea Park, London Capital Culture Gallery AAF Hampstead, London Capital Culture Gallery AAF Stockholm SWE

2015	Capital Culture Gallery AAF Battersea Park, London Capital Culture Gallery AAF Hampstead, London Capital Culture Gallery Liverpool Contemporary Art Fair
2014	Capital Culture Gallery, AAF, Amsterdam, Netherlands Capital Culture Gallery, AAF, Hamburg, Germany Capital Culture Gallery, AAF, Hampstead Heath, London, UK Capital Culture Gallery, AAF, Battersea Park, London, UK
2013	Oasis Africa Australia, Charity Auction, Sydney, Australia
2011	'Frost ', The Happening Gallery, Venice, CA, USA 'True Love', The Happening Gallery, Venice, CA, USA 'Melange 70', Gallery 6, Islamabad, Pakistan
2011	'A Painted Odyssey', Capital Culture, UK 'Sulman Prize', Art Gallery of NSW, Sydney, Australia 'Haunt', The Happening Gallery, Venice, CA, USA 'Summer Days', Genesis Gallery, Athens, Greece 'Understanding Country', Francis Keevil Gallery, Sydney, Australia
2010	Genesis Gallery, Athens, Greece
2007	Cuban Cultural Festival, Square1 Gallery, London, UK Art International, Guaranty Trust Bank, Lyford Manor, Nassau, Bahamas International Woman's Day, Cannizaro House, London, UK International Woman's Day, Square 1 Gallery, London, UK
2006	Art International, Guaranty Trust Bank, Lyford manor, Nassau, Bahamas
2004	Collectors Exhibition of Contemporary Art, Brenda Colahan Fine Art, Sydney, Australia
1999	French Chamber of Commerce 100 Years, Art Gallery of New South Wales
1998	Tap Gallery, Sydney, Australia Luigi Bros, Sydney, Australia
1996	Fat Dog Gallery, Rotorua, New Zealand Freos, Rotorua, New Zealand Astrolabe, Taupo, New Zealand Replete, Taupo, New Zealand
1995	Rotorua Art and History Museum, Rotorua, New Zealand

SELECTED AWARDS

2021	Finalist, Paddington Art Prize 2020, Defiance Gallery, Paddington, Australia
2020	Finalist, Paddington Art Prize 2020, Defiance Gallery, Paddington, Australia
2011	Finalist Sulman Prize, Art Gallery of NSW, Sydney, Australia
2007	Finalist Mosman prize, Sydney, Australia
1999	Selected NSW Art Gallery, French Chamber of Commerce 100 Years, Australia
1995	Selected RAHM Emerging Young Artists Exhibition, Rotorua, NZ
1993	Finalist Chiba-Ken Regional Art Competition, Japan

COLLECTIONS

Princess Guirey
Princess Borghese
Schroder Equities
First Folio
Van Eyk
VM Ware
The Thought Group
HA Centurion Enterprises
Equity Partners
Schiavi
Nanyang Venture Capital
Sugar International
Conexus Financial
Fat Prophets
Brody House Collection
RZA



PEEK
GALLERY

7/8 Fletcher Street, Byron Bay, NSW 2481
hello@peekgallery.com | 0488 64 64 64
peekgallery.com